

# THE DENTAL ADVISOR™



"Improved Patient Care Through Research and Education"

## ZOOM! Advanced Power Chairside Whitening System Effect of ZOOM! Advanced Power Lamp on Whitening

Discus Dental, Inc.  
800.422.9448 • 310.845.8200  
www.discusdental.com



### Description

**ZOOM! Advanced Power Whitening System** is a light-assisted, in-office, tooth whitening system. The **ZOOM!** procedure utilizes three, 15-minute applications of 25% hydrogen peroxide gel in conjunction with the **ZOOM! Advanced Power Lamp**. The latest version of the lamp, *Advanced Power*, has been modified to include a new, high-output, sodium-free, short-arc bulb; advanced optical alignment; intuitive LCD control panel; locking casters; and a sleek, ergonomic design that folds down for easy storage. The *Chairside Whitening Procedure Kit* comes in a dual pack containing two individually sealed procedure trays, two plastic cases for take-home trays, gauze and two light guides. Each tray includes instructions, two pre-treatment swabs; two 1.3-g syringes of *Liquidam Dental Dam*; protective lip cream; vitamin E oil; a paint brush, two

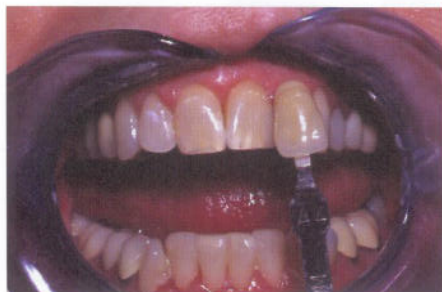
face bibs, one syringe of *Relief ACP* desensitizing gel, and a 2.4-g syringe of touch up material. Touch up options include; *DayWhite ACP*, *NiteWhite ACP* or *NiteWhite ACP Turbo*. Retractors are sold separately.

### Clinical Evaluation Protocol

- Seventeen patients received **ZOOM! Advanced Power Whitening System** using the new **ZOOM! Advanced Power Lamp**.
- Eleven patients received **ZOOM! Advanced Power Whitening System** without use of the lamp.
- All patients had a start shade of Vita A3 or darker, and no tetracycline stains were treated.
- "Before" and "After" shades were taken on each patient using the Vita Classic value-arranged shade guide. The shade change immediately following the in-office procedure was recorded.

*continued on back*

### CLINICAL RESULTS: BEFORE AND AFTER



## REPRINT

### EDITORS

John W. Farah, D.D.S., Ph.D.  
John M. Powers, Ph.D.

### ASSOCIATE EDITORS

William A. Gregory, D.D.S., M.S.  
Peter Yaman, D.D.S., M.S.  
Lori K. Brown, D.D.S.  
Santine E. Anderson, D.D.S.  
Charles I. McLaren, D.D.S., M.S.  
John D. McLaren, D.D.S., M.S.  
Larissa K. Bishop, D.D.S.

### ASSISTANT EDITORS

Mert Aksu, D.D.S., J.D., M.H.S.A.  
Mark T. Waranowicz, D.D.S., M.S.  
Darren R. Marsh, D.D.S.  
William T. Stevenson, D.D.S.  
Robert Stevenson, D.D.S.  
Nizar Mansour, D.D.S.  
Sabiha S. Bunek, D.D.S.  
Kathy L. O'Keefe, D.D.S., M.S.

### ADVISORY BOARD

John O. Burgess, D.D.S., M.S.  
Karl F. Leinfelder, D.D.S., M.S.  
John A. Molinari, Ph.D.  
Frederick A. Rueggeberg, D.D.S., M.S.  
Edward J. Swift, Jr., D.M.D., M.S.  
Charles W. Wakefield, D.D.S.

### EXECUTIVE DIRECTOR

Mary E. Yakas, BA, CMC

### DIRECTOR OF RESEARCH

Ron Yapp, M.S.

### EXECUTIVE TEAM

Stephanie D. Farquhar  
Annettè M. Frederick  
Tricia G. Price  
Kathryn Tillison  
Rhonda L. Tucker  
Cara L. Voss

### PUBLISHER

Dental Consultants, Inc.

Please send inquiries and address changes to: **THE DENTAL ADVISOR**  
3110 West Liberty, Ann Arbor, MI  
48103

Call: 800.347.1330 • 734.665.2020  
Fax: 734.665.1648  
E-mail: info@dentaladvisor.com  
Web Site: www.dentaladvisor.com

Copyright ©2007, Dental Consultants, Inc.

All rights reserved. Printed in the U.S.A.  
(ISSN 0748-4666)

### Ratings

Excellent + + + + +  
Very Good + + + +  
Good + + +

# ZOOM! Advanced Power Chairside Whitening System

## Effect of ZOOM! Advanced Power Lamp on Whitening

- All patients were recalled at 7-10 days and again at 30 days after the in-office procedure to evaluate final shade and patient satisfaction. Patients were given a survey and asked to rate the effectiveness of treatment, sensitivity, satisfaction, and their overall opinion of the treatment.

### Clinical Observations

#### I. Shade Change Immediately Following Zoom! In Office Bleaching Treatment

#### II. Shade Change 7-10 Days After Zoom! In-Office Bleaching Treatment

#### III. Shade Change 30 Days After Zoom! In-Office Bleaching Treatment

##### I. Shade Change Immediately Following Zoom! In-Office Bleaching Treatment

	Average Shade Change – Maxillary	Average Shade Change – Mandibular
Advanced Power Lamp	7.6 (1.8)*	7.1 (1.7)
No Lamp	5.7 (2.0)	6.2 (1.8)

##### II. Shade Change 7-10 Days After Zoom! In-Office Bleaching Treatment

	Average Shade Change – Maxillary	Average Shade Change – Mandibular
Advanced Power Lamp	5.9 (1.8)*	5.9 (2.1)
No Lamp	4.7 (2.1)	5.0 (2.4)

##### III. Shade Change 30 Days After Zoom! In-Office Bleaching Treatment

	Average Shade Change – Maxillary	Average Shade Change – Mandibular
Advanced Power Lamp	6.4 (2.0)*	5.8 (2.0)
No Lamp	4.5 (1.8)	5.1 (2.3)

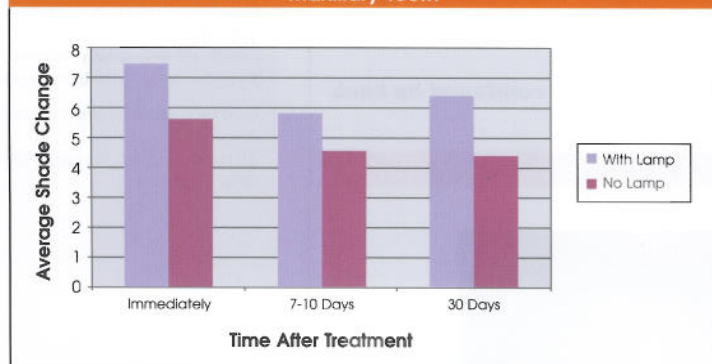
Overall, patients who received treatment with the *ZOOM! Advance Power Lamp* were more satisfied with the results of their in-office whitening treatment when compared to those patients who received the whitening treatment without the lamp. Patients who received treatment with the *ZOOM! Advance Power Lamp* had a higher rate of satisfaction and found the treatment to be more effective.

However, patients who received treatment with the lamp also reported more sensitivity during treatment. Many patients reported the lamp was too intense and produced a burning sensation.

### Conclusions

Whitening with use of the *ZOOM! Advanced Power Lamp* resulted in a greater shade change compared to whitening without the lamp immediately after treatment, after 7-10 days, and after 30 days. Results immediately after whitening and at 30 days with the use of the *ZOOM! Advance Power Lamp* showed that maxillary teeth on average were 1.9 shades lighter and mandibular teeth were 0.7 shades lighter as compared to whitening without the lamp.

ZOOM! Advanced Power Lamp Vs. No Lamp; Maxillary Teeth



ZOOM! Advanced Power Lamp Vs. No Lamp; Mandibular Teeth

